

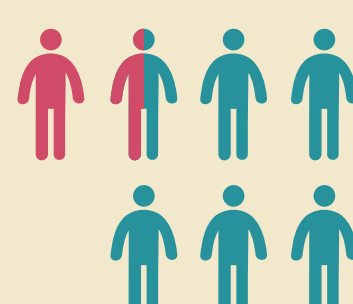
WHO OWNS THE WORLD'S LAND?

Globally, 1.5 billion people manage their land through indigenous or community-based systems.

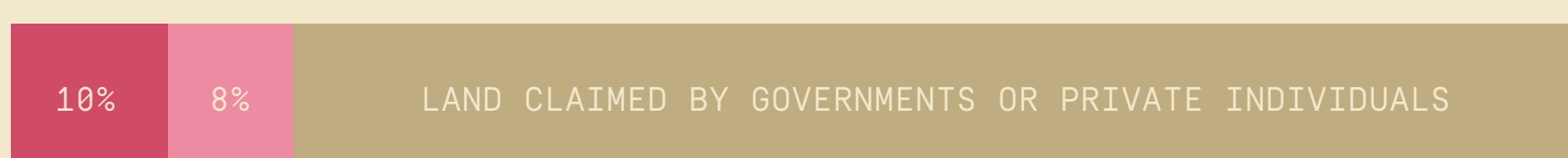
By one estimate, up to 65% of earth is indigenous or community land



More than 1 out of every 7 people on earth rely on customary forms of land ownership



An analysis of 64 countries covering 82% of land revealed that Indigenous Peoples and local communities only have government-recognized rights to 18% of land in the countries studied.



- Land owned by local and indigenous communities
- Land designated for local and indigenous communities

“ This report spells out the catastrophic failure of governments to respect the basic land rights of more than one billion people. ”

Andy White, RRI

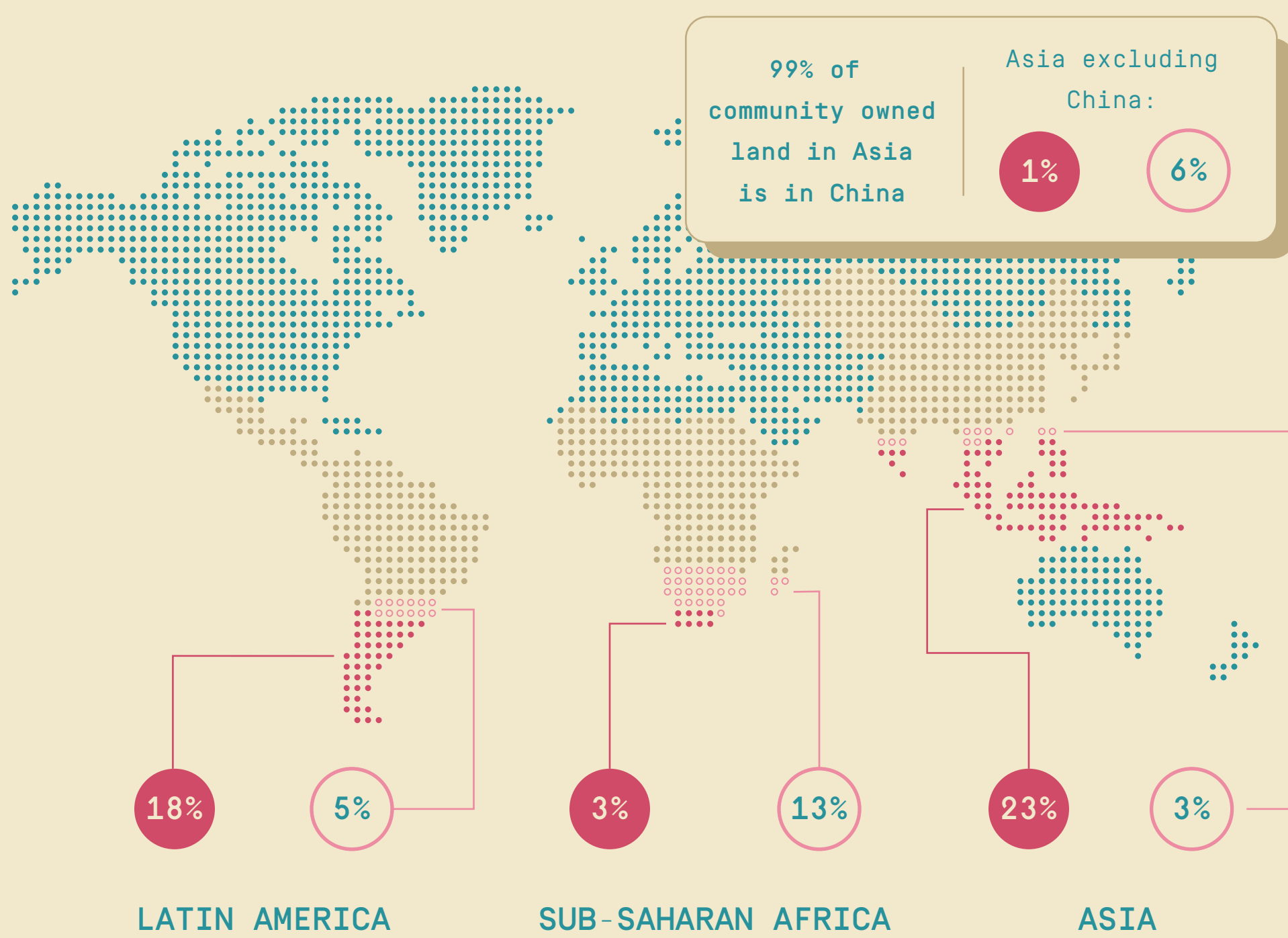
Five countries dominate the global results for the land area under indigenous and community ownership or control.

The vast majority of communities in many other countries have no legal rights to their land.



REGIONAL RESULTS

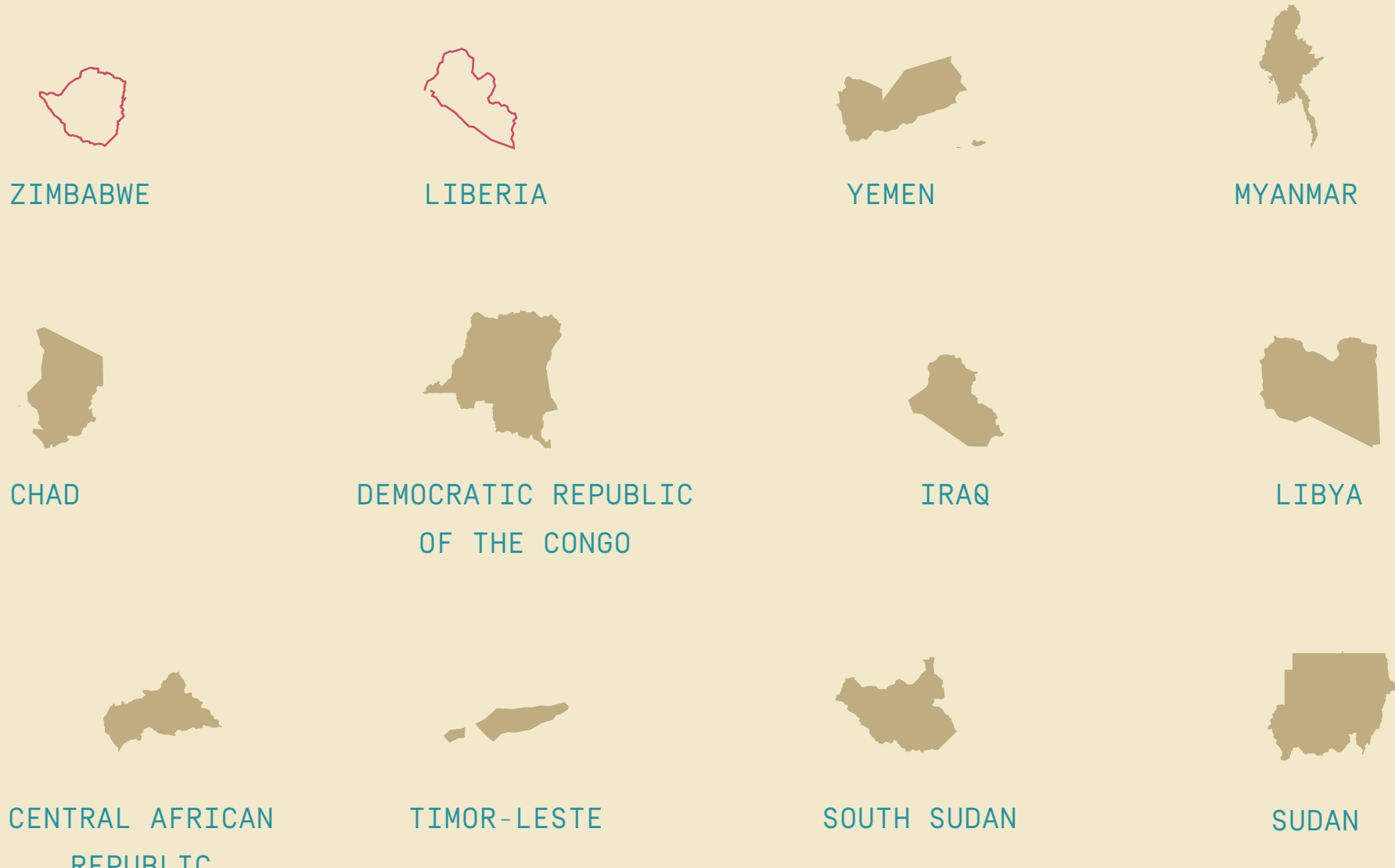
- % land owned by local and indigenous communities
- % land designated for local and indigenous communities
- % owned by governments or private enterprise



LAND RIGHTS AND FRAGILE STATES

In 10 of 12 countries in this report classified as fragile states by the World Bank, governments and the private sector lay claim to nearly 100% of indigenous and community land.

- Some formal recognition of community land
- Virtually no formal recognition



READ MORE AT WWW.RIGHTSANDRESOURCES.ORG



WHO OWNS THE WORLD'S LAND?

An analysis of 64 countries covering 82% of land revealed that Indigenous Peoples and local communities only have government-recognized rights to 18% of earth's total land area.




■ Land owned by local and indigenous communities


■ Land designated for local and indigenous communities

WHO OWNS THE WORLD'S LAND?

An analysis of 64 countries covering 82% of earth's land revealed that Indigenous Peoples and local communities only have government-recognized rights to 18% of their ancestral land.



 Land owned by local and indigenous communities

 Land designated for local and indigenous communities